
**特点 Features:**

- 高触点容量: 16A触点切换能力.  
High contact switching capability: 16A.
- 高灵敏型: 200mw.  
High Sensitivity type: 200mw
- 低高度: 10.5mm.  
Low height: 10.5mm.

**触点参数 CONTACT DATA**

|          |                             |                         |
|----------|-----------------------------|-------------------------|
| 型号       | Model                       | YX206F                  |
| 触点形式     | Contact Arrangement         | 1A                      |
| 接触电阻     | Contact Resistance          | 100mΩ Max.              |
| 触点材料     | Contact Material            | 银合金 Silver Alloy        |
| 额定负载(阻性) | Contact Rating ( Res.Load ) | 16A 250VAC/30VDC        |
| 最大切换电流   | Max. Switching Current      | 16A                     |
| 最大切换电压   | Max. Switching Voltage      | 277VAC/30VDC            |
| 最大切换功率   | Max. Switching Power        | 4000VA/480W             |
| 机械寿命     | Mechanical endurance        | 1x10 <sup>7</sup> 次 OPS |
| 电气寿命     | Electrical endurance        | 1x10 <sup>5</sup> 次 OPS |

**性能参数 CHARACTERISTICS**

|             |                                |  |
|-------------|--------------------------------|--|
| 吸合时间(额定电压下) | Operate Time ( at nomi.volt. ) | 15ms Max.  |
| 释放时间(不带二极管) | Release Time ( without diode ) | 8ms Max.   |
| 绝缘电阻        | Insulation Resistance          | 1000MΩ Min.( 500VDC )                                    |
| 介质耐压        | Dielectric Strength            | 触点与触点间 Between Open Contacts : 1,000VAC, 50/60Hz 1 min.  |
|             |                                | 触点与线圈间 Between Coil & Contacts: 2,500VAC, 50/60Hz 1 min. |
| 抗振性         | Vibration resistance           | 误动作 Functional: 10~55Hz 双振幅 1.5mm ( DA )                 |
|             |                                | 耐久 Destructive: 10~55Hz 双振幅 1.5mm ( DA )                 |
| 抗冲击         | Shock resistance               | 误动作 Functional: 10G Min.                                 |
|             |                                | 耐久 Destructive: 100G Min.                                |
| 环境温度        | Ambient Temperature            | -40°C~+85°C (不冷凝 No condensation)                        |
| 重量          | Unit Weight                    | 约 Approx. 8.8g   |

**线圈参数 COIL DATA (at 23°C)**

| 额定电压<br>Rated voltage<br>(VDC) | 额定电流<br>Rated current<br>±10%(mA) | 线圈电阻<br>Coil resistance<br>±10%(Ω) | 最大连续外加电压<br>Max allowable voltage<br>VDC (Max.) | 吸合电压<br>Operate voltage<br>VDC (Max.) | 释放电压<br>Release voltage<br>VDC (Min.) | 额定功率<br>Rated coil power<br>(W) |
|--------------------------------|-----------------------------------|------------------------------------|---|---------------------------------------|---------------------------------------|---------------------------------|
| 3                              | 67                                | 45                                 | 额定电压的<br>of rated voltage<br>150 %              | 额定电压的<br>of rated voltage<br>75 %     | 额定电压的<br>of rated voltage<br>5 %      | 约 approx.<br>0.2                |
| 5                              | 40.0                              | 125                                |   |                                       |                                       |                                 |
| 6                              | 33.3                              | 180                                |   |                                       |                                       |                                 |
| 9                              | 22.2                              | 405                                |   |                                       |                                       |                                 |
| 12                             | 16.7                              | 720                                |   |                                       |                                       |                                 |
| 18                             | 11.1                              | 1620                               |   |                                       |                                       |                                 |
| 24                             | 8.3                               | 2,880                              |   |                                       |                                       |                                 |
| 48                             | 7.1                               | 6,770                              |   |                                       |                                       | 约 approx. 0.34                  |

## 订货标记示例 ORDERING INFORMATION

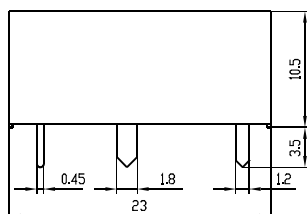
|        |    |                                |    |                               |   |  |
|--------|----|--------------------------------|----|-------------------------------|---|--|
| YX206F | -S | -1                             | 12 | D                             | M |  |
|        |    | 触点形式 Contact form :            |    | M-常开 M-Form A                 |   |  |
|        |    | 线圈功耗 Coil power :              |    | D-0.2 W                       |   |  |
|        |    | 线圈规格 Coil voltage :            |    | 03,05,06,09,12,18,24,48 (VDC) |   |  |
|        |    | 触点组数 Number of poles :         |    | 1-1组 1-1 Group                |   |  |
|        |    | 封装形式 Protective construction : |    | S-塑封式 S-Flux proofed          |   |  |
|        |    | 基本型号 Type designation :        |    | YX206F                        |   |  |

## 外形尺寸、接线图、安装孔位图 (单位: mm)

## OUTLINE DIMENSIONS, WIRING DIAGRAM AND PCB LAYOUT (Unit: mm)

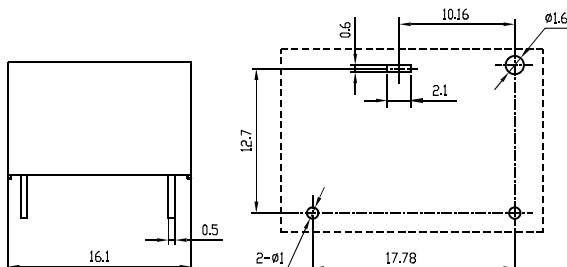
外形尺寸

Outline Dimensions



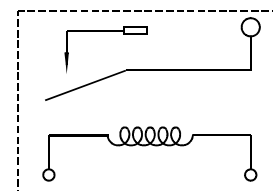
安装孔位图 (底视图)

PCB Layout ( Bottom View )



接线图 (底视图)

Wiring Diagram ( Bottom View )



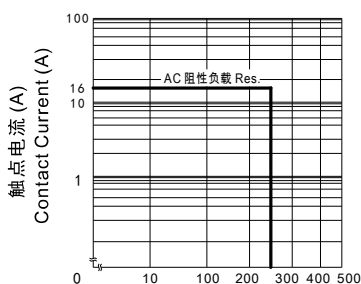
常开型  
1 Form A

注 Remark :

- 1.未标注尺寸公差 Unmarked dimensional tolerance  
≤1mm: ±0.2mm ; (1~5)mm: ±0.3mm ; ≥5mm: ±0.4mm.
- 2.安装孔尺寸公差: ±0.1mm.  
The tolerance of PCB layout is always: ±0.1mm.
- 3.引出脚尺寸为预焊前尺寸.  
Extended terminal dimension is dimension before soldering.

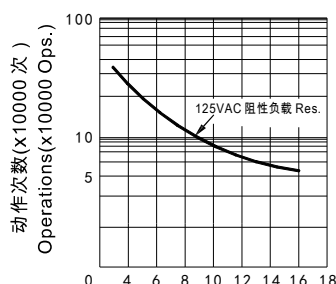
## 性能曲线图 CHARACTERISTIC CURVES

最大切换功率  
Max. Switching Power



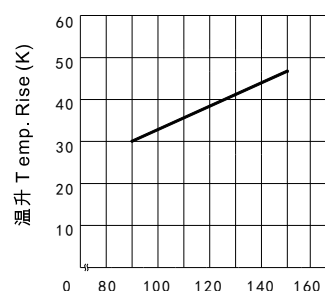
触点电压 (V)  
Contact Voltage (V)

寿命曲线  
Endurance Curve



触点电流 (A)  
Contact Current (A)

线圈温升  
Coil Temperature Rise



线圈额定电压百分比  
Percentage of Nominal Coil Voltage